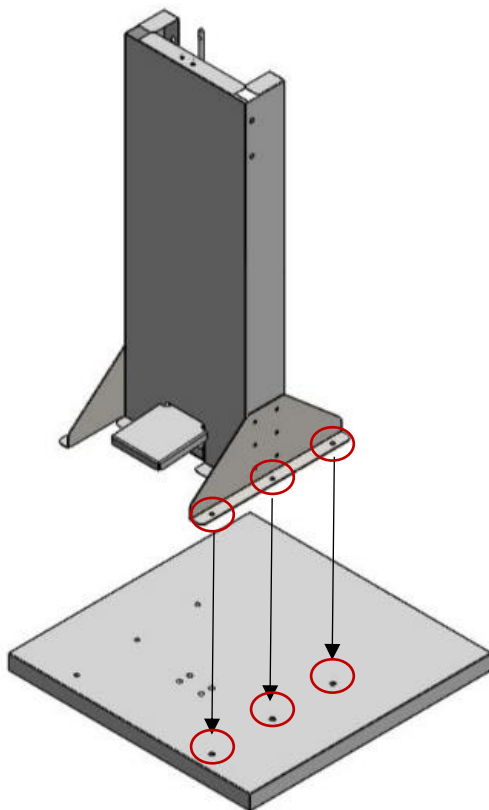


DISINFECTANT UNIT INSTALLATION INSTRUCTION

AYK001

STAINLESS STEEL MOBILE DISINFECTANT UNIT

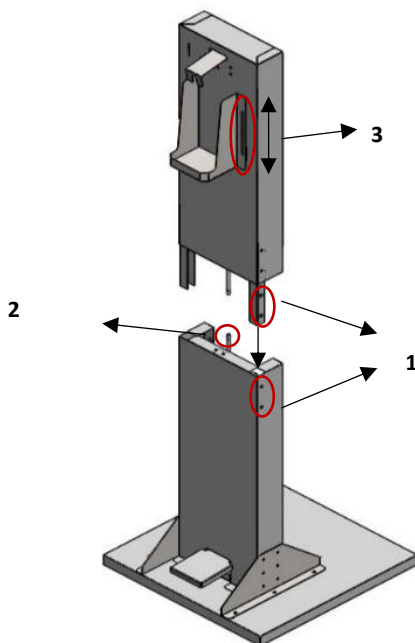
1



- Place and screw the top of the unit to the sheet metal shown in the picture, corresponding to the connection points on the unit.

STAINLESS STEEL MOBILE DISINFECTANT UNIT

2



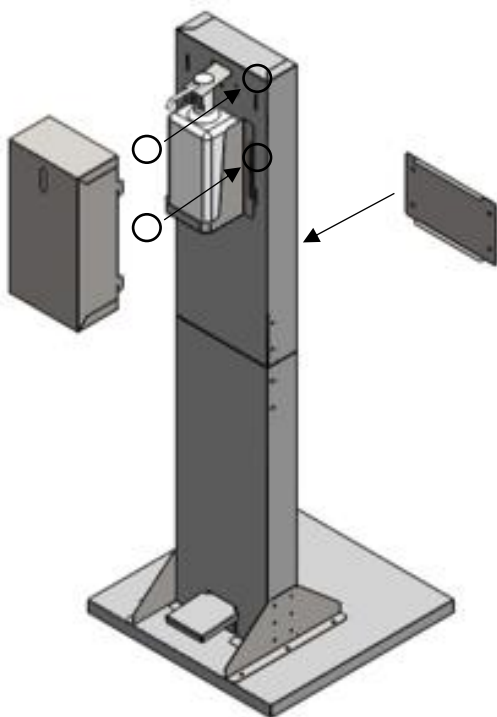
1 - Insert the upper part of the disinfection unit into the corner points of the lower part shown in the picture and fasten it with bolts from the connection points on the side.

2 - After connecting the mechanism shaft of the disinfection unit, insert the pin sent next to the station at the junction point on the shaft.

3 - To adjust the disinfectant container according to the height of your specific container, adjust as shown in the figure according to the desired height, and fix it with the bolts provided.

STAINLESS STEEL MOBILE DISINFECTANT UNIT

3



- Close and screw the back cover to the open area on the back of the station, corresponding to the screw connection points.
- Place the disinfectant on the mechanism.
- Place the hood for the disinfectant in the position shown and snap it to fix.